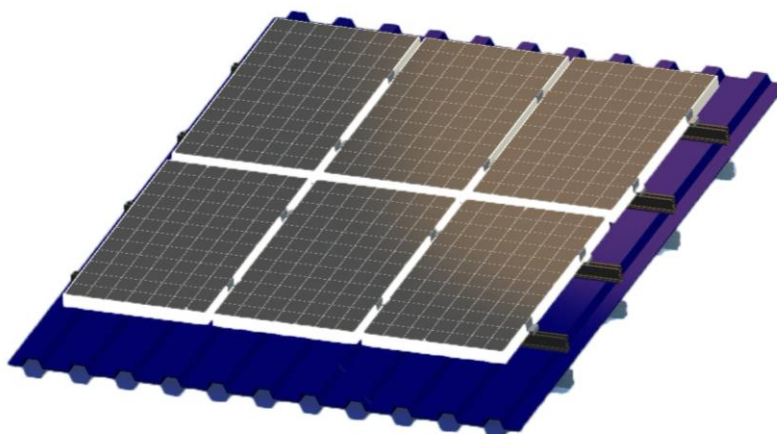




SI Standing Seam Roof System Installation Manual



Standing Seam Roof System is the easiest mounting system which requires minimal materials and tools, while also being the most secure. Since no tiles can be removed on metal sheet roofs, the only way to fix rails is by fastening clamps onto standing seams. Racworth offers various types of trapezoidal clamps to fit all standing seams. Each component is perfectly designed for the corresponding type of metal sheet roof; optimizing the mounting system in term of function and aesthetics.

Benefits

- * Safe & economical

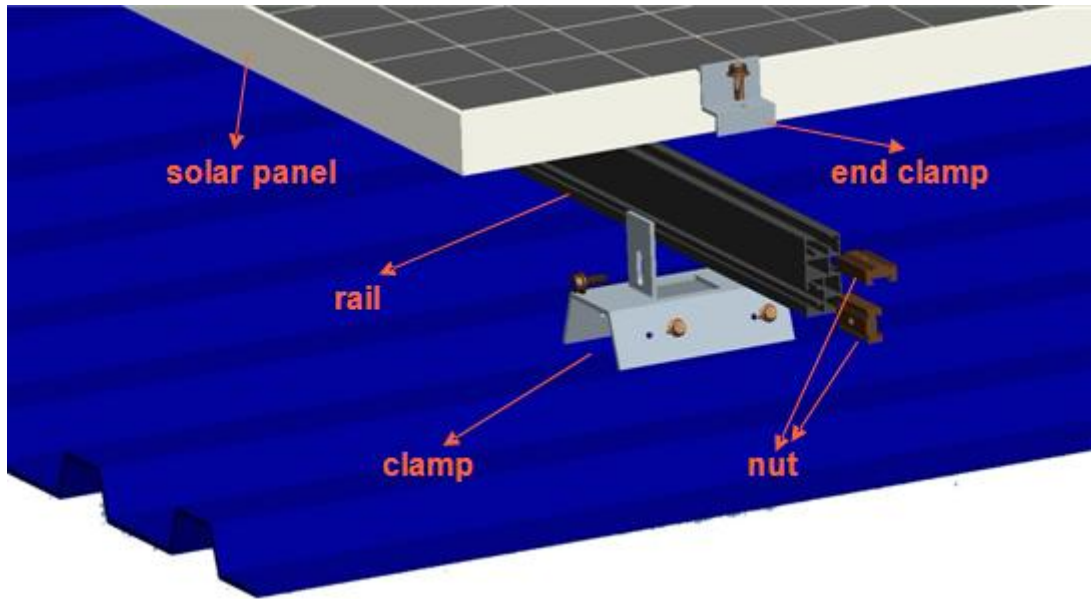
With high quality and low cost components, we are dedicated to providing safe and economical mounting solutions for standard metal sheet roofs.

- * Special design saves installation time

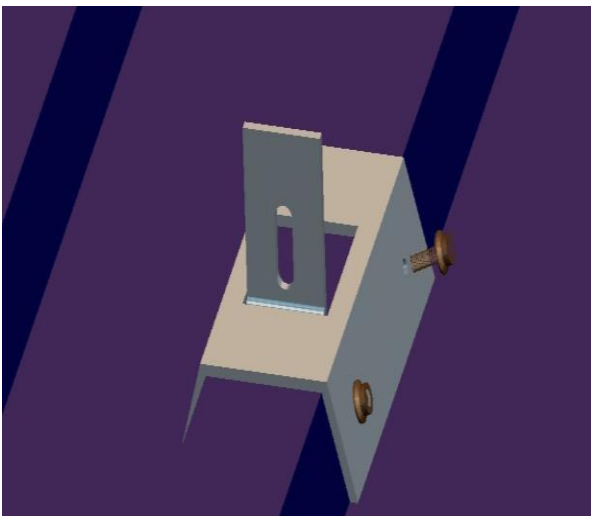
- * Customized solutions are appropriate for any type of metal sheet roof.

We can provide any customized solution for metal sheet roofs, achieving both aesthetics and functionality.

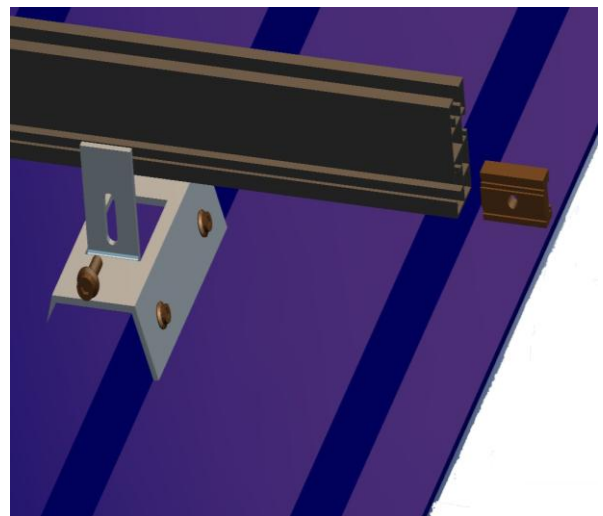
Components



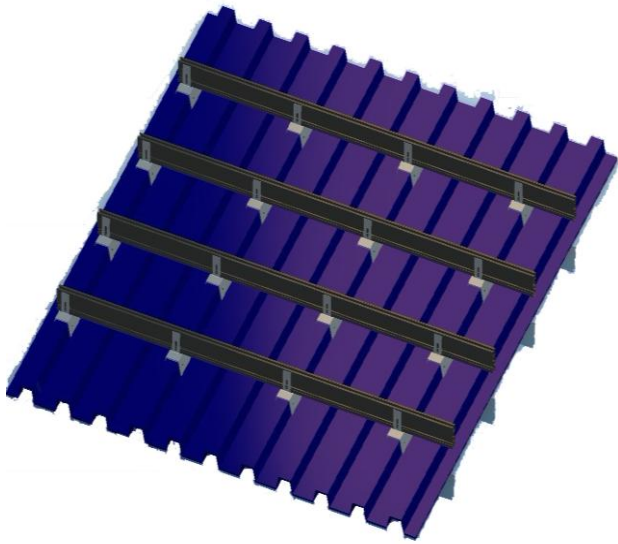
Installation



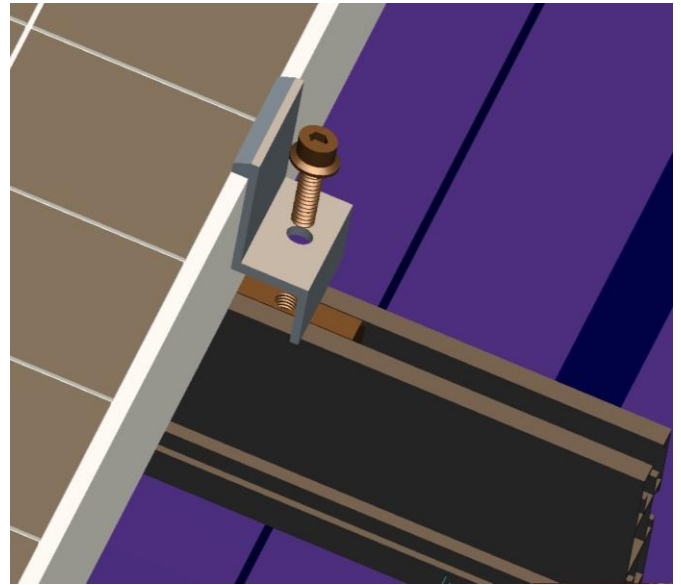
1. Use four screws to fasten the clamp on the standing seam.



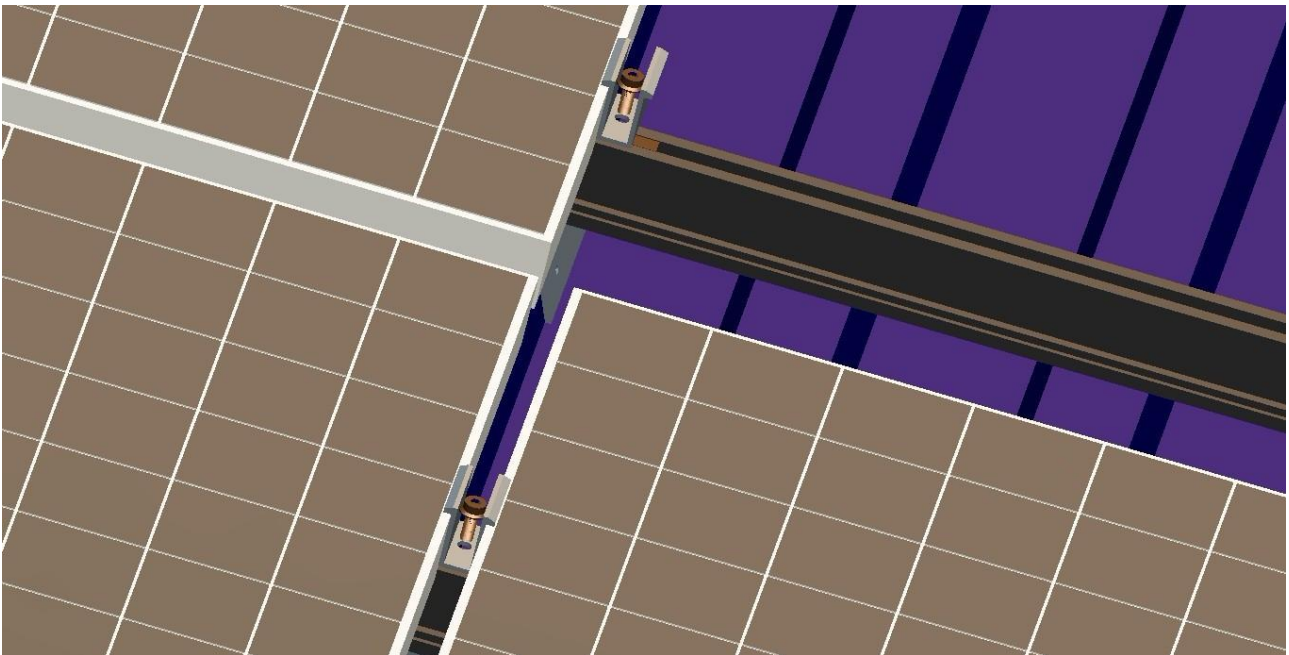
2. Insert the nut into the groove of the rail and fasten with a bolt to fix the rail onto the clamp.



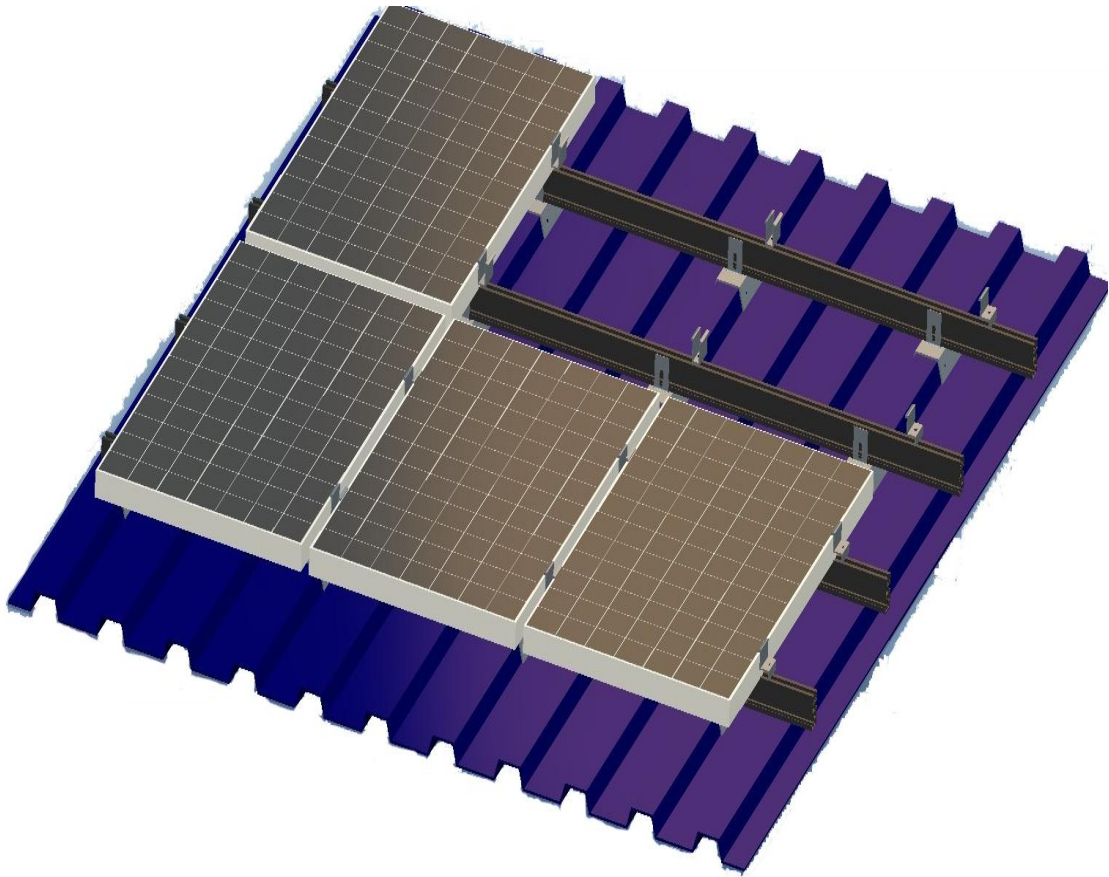
3. Fix all the clamps onto the standing seam roof and fasten the rails onto them.



4. Insert the screw into the end clamp, then fasten the solar panel onto the rail.



5. Insert the screw into the mid clamp, and fasten the two solar panels onto the rail.



6. Secure the other solar panels to the roof by repeating the steps listed above.