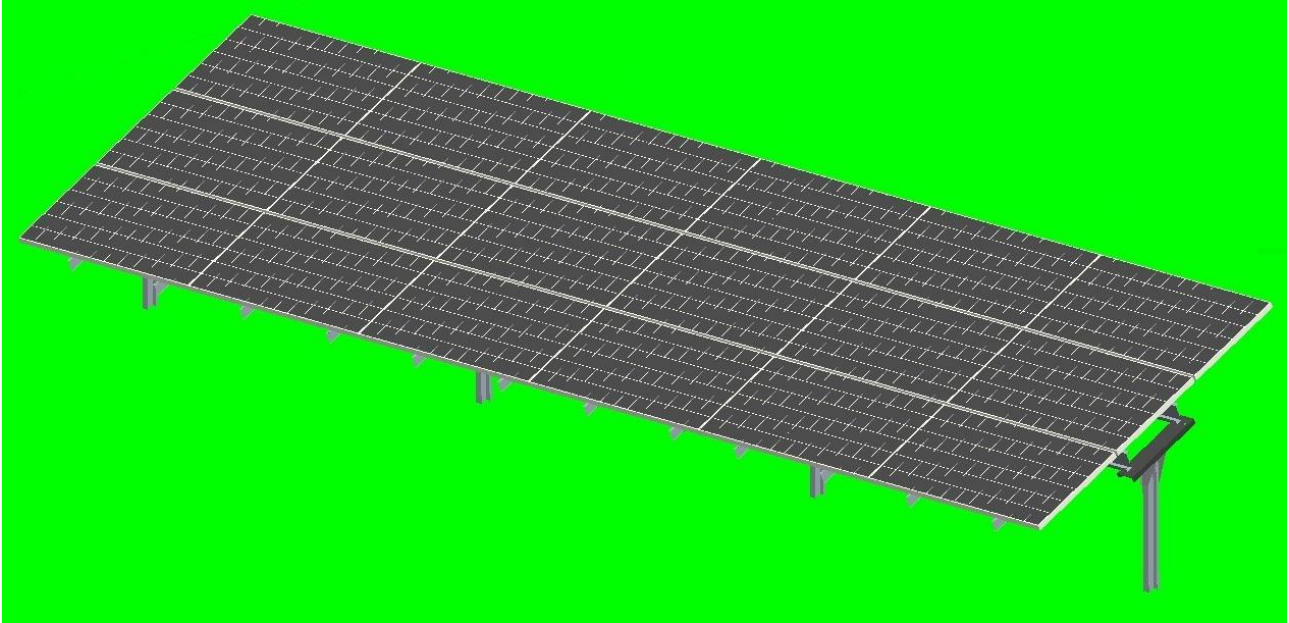




SPH Mount Installation Manual

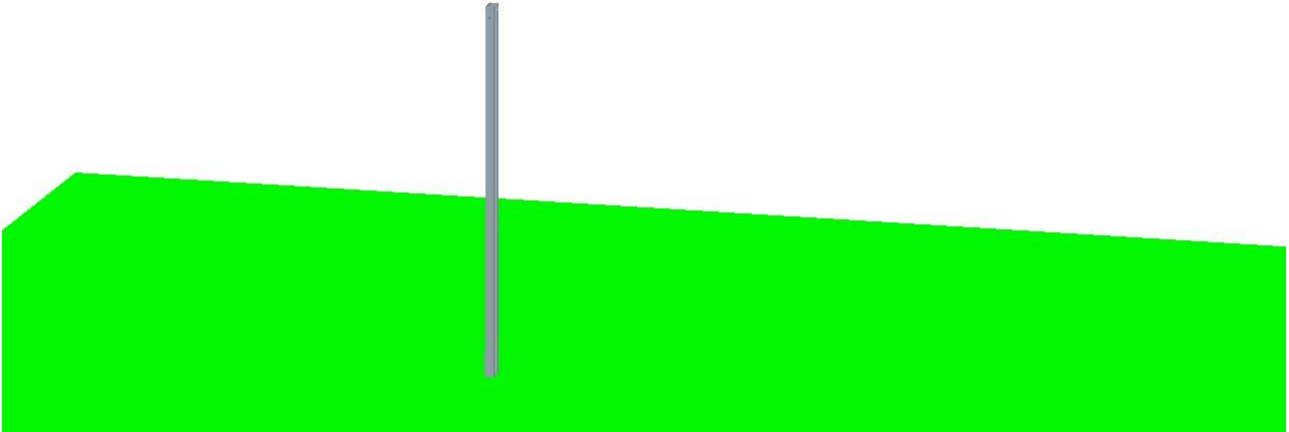


The SPH Mount is a ground mounting system which can be installed on a large scale. The foundation posts, girders and girder supports are made of galvanized steel and the purlins and clamps are made of aluminum alloy which ensure long lasting service time. Installation steps are easy and quick to save labor cost.

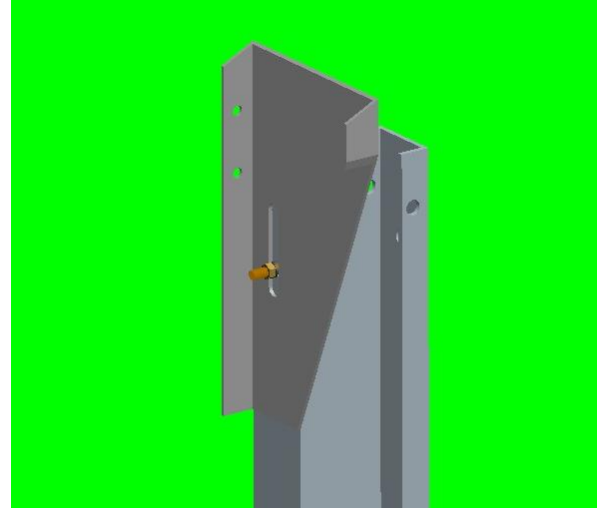
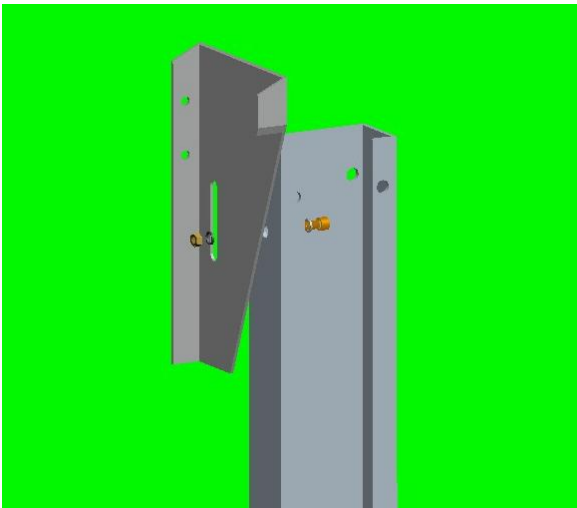
Benefits

- * Suitable for any type of terrain and climate.
- * Pre-assembled parts allow for quick and easy installation.
- * Compatible with any type of solar panel.
- * Aluminum alloy reduces structure weight and increases corrosion resistance.

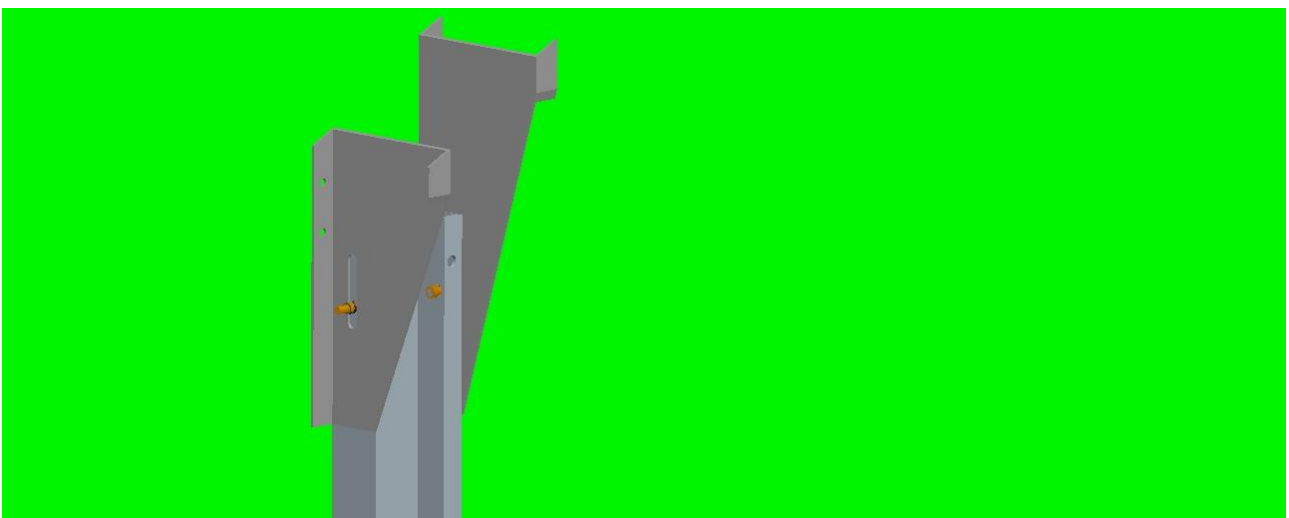
Installation procedures



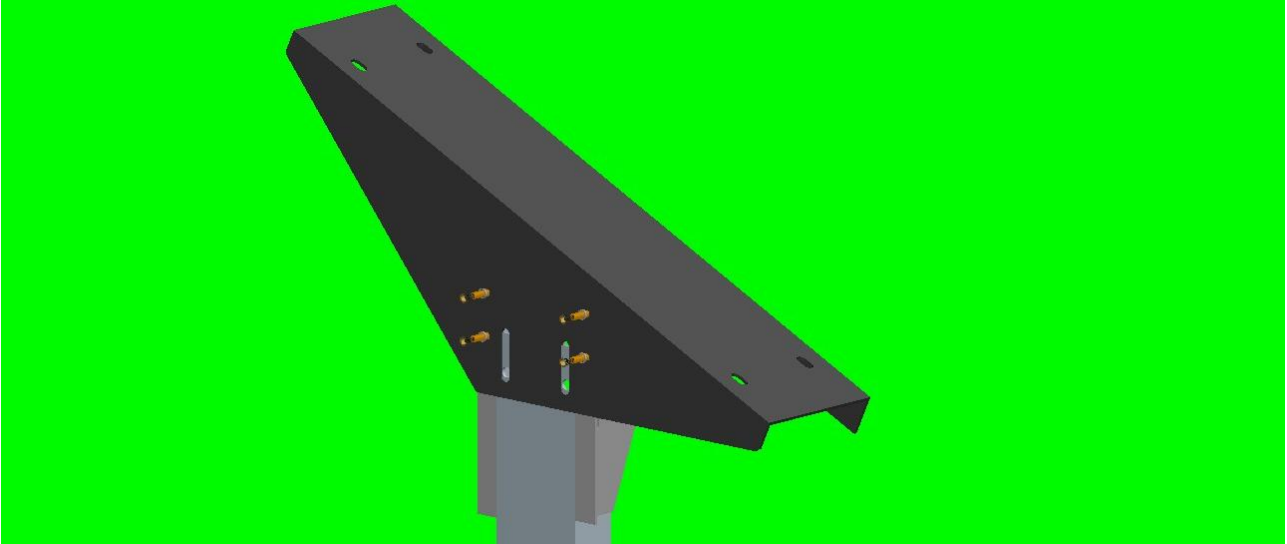
1. Install foundation posts. Due to varying terrain and environmental conditions, the installation procedures may differ.



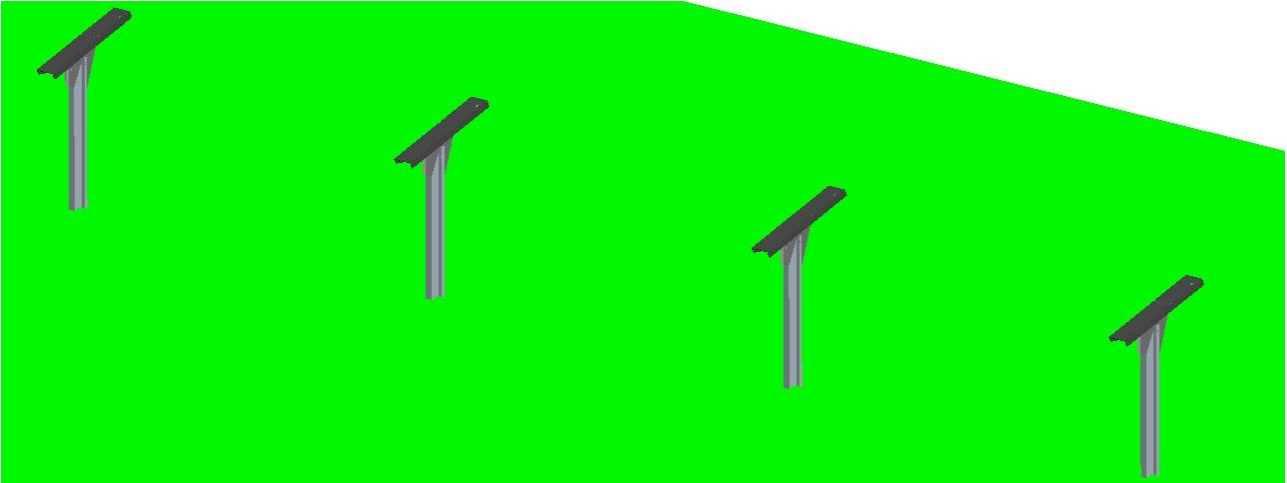
2. Fix the short support onto the foundation post and fasten it.



3. Fix the long support onto the foundation post and fasten it.

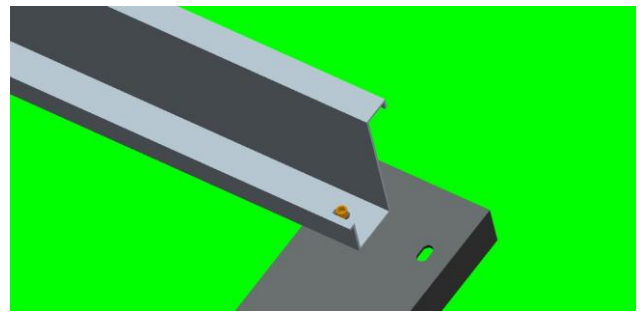
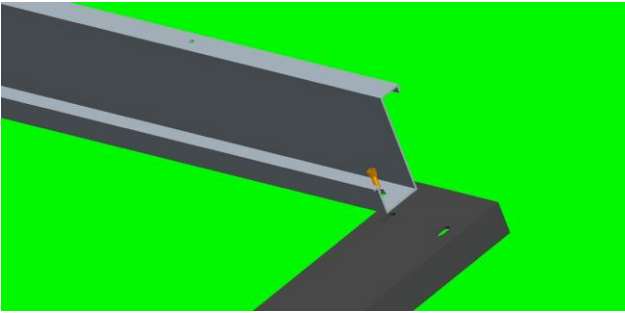


4. Place the girder support onto the short and long supports and fasten it on them.

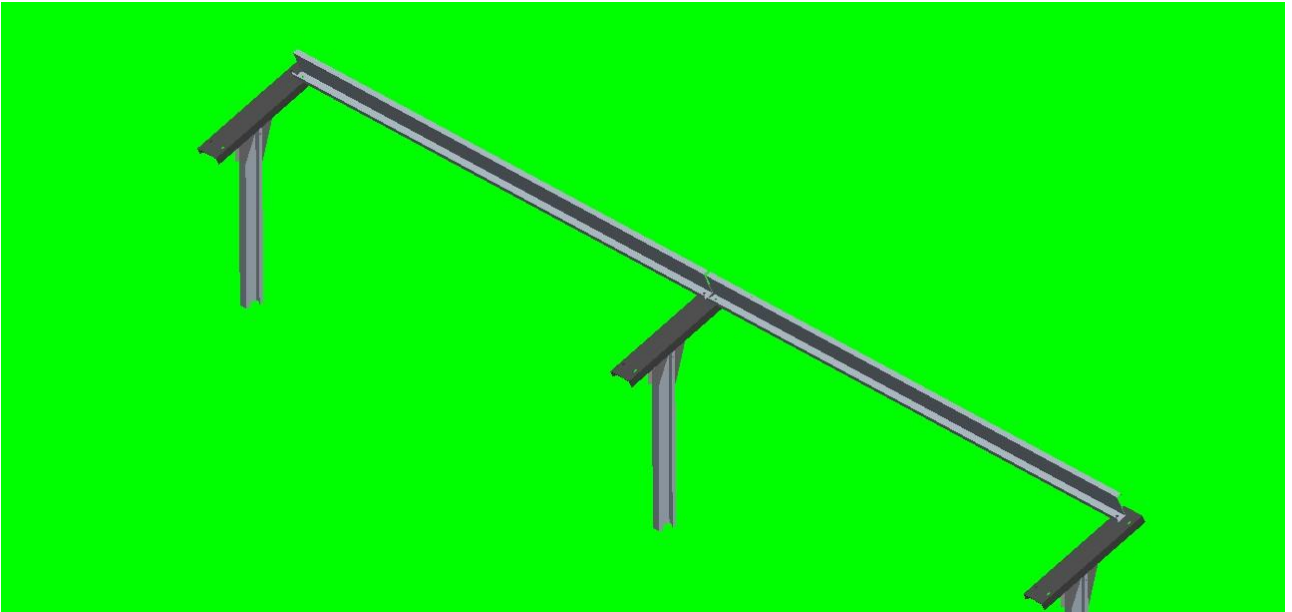


5. Repeat the above steps to install the other foundation posts and girder supports.

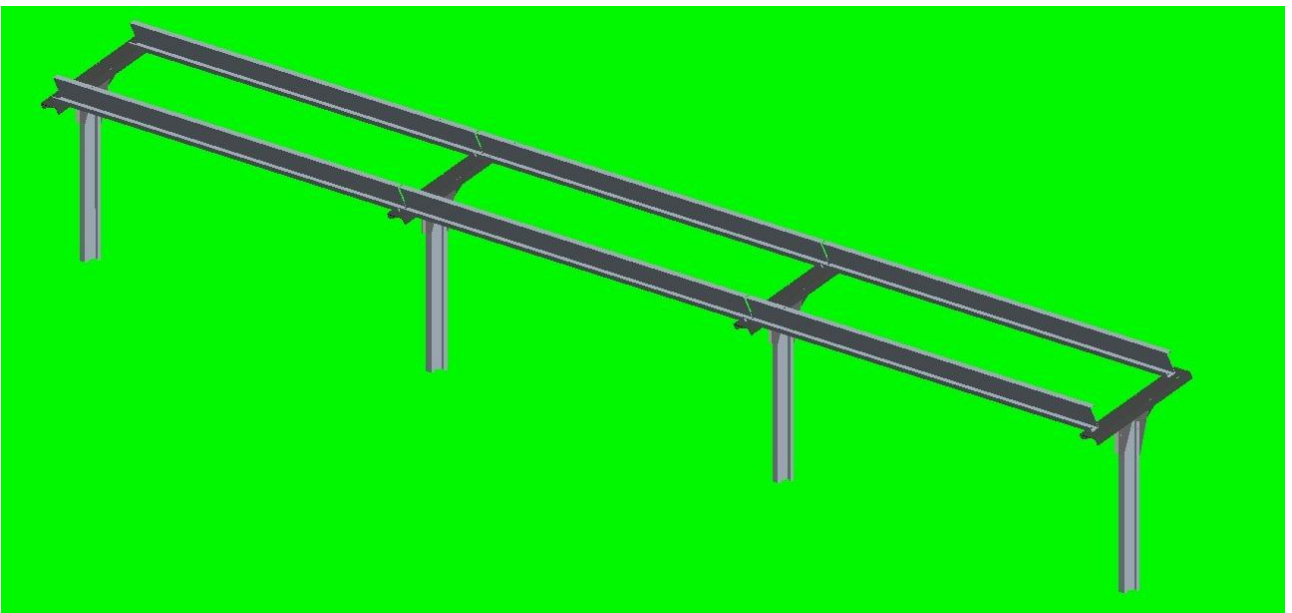




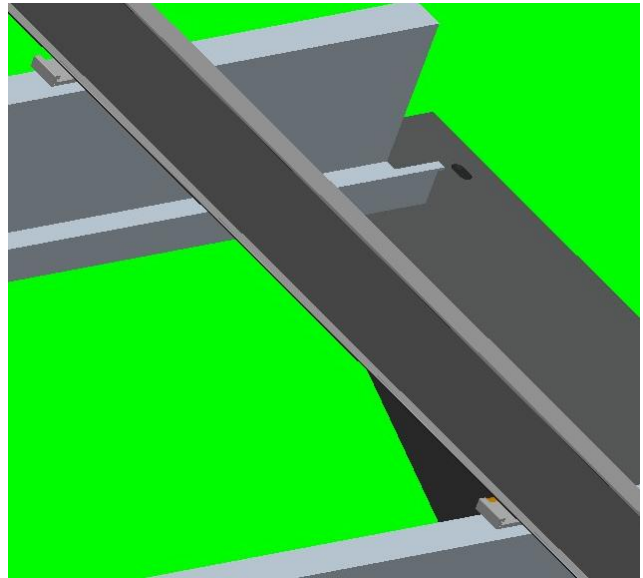
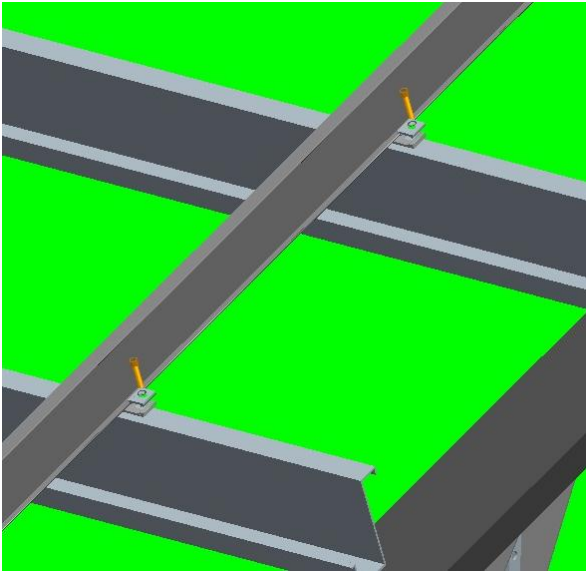
6. Put the girder onto the girder supports and fasten it.



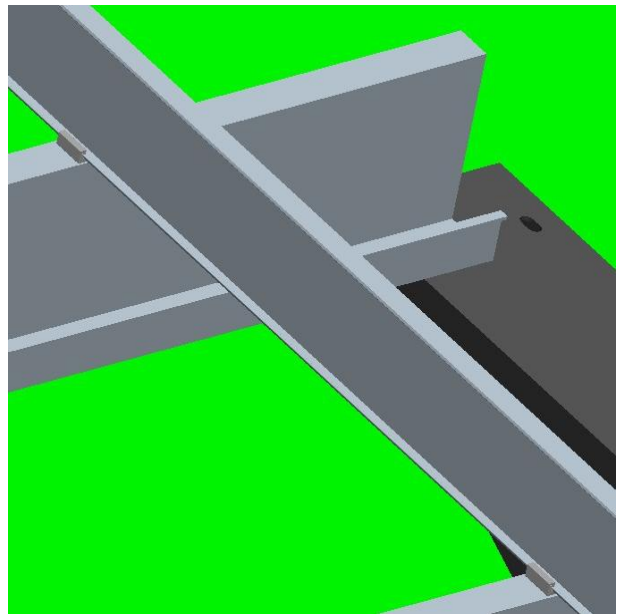
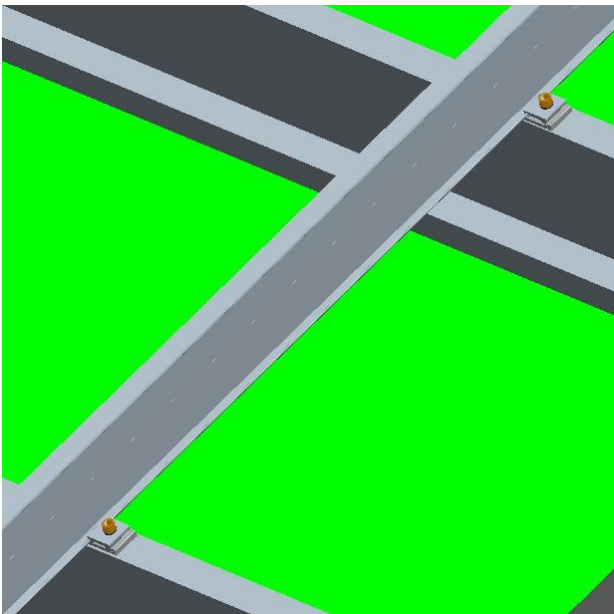
7. Repeat above steps to install other girders as showing as the pictures.



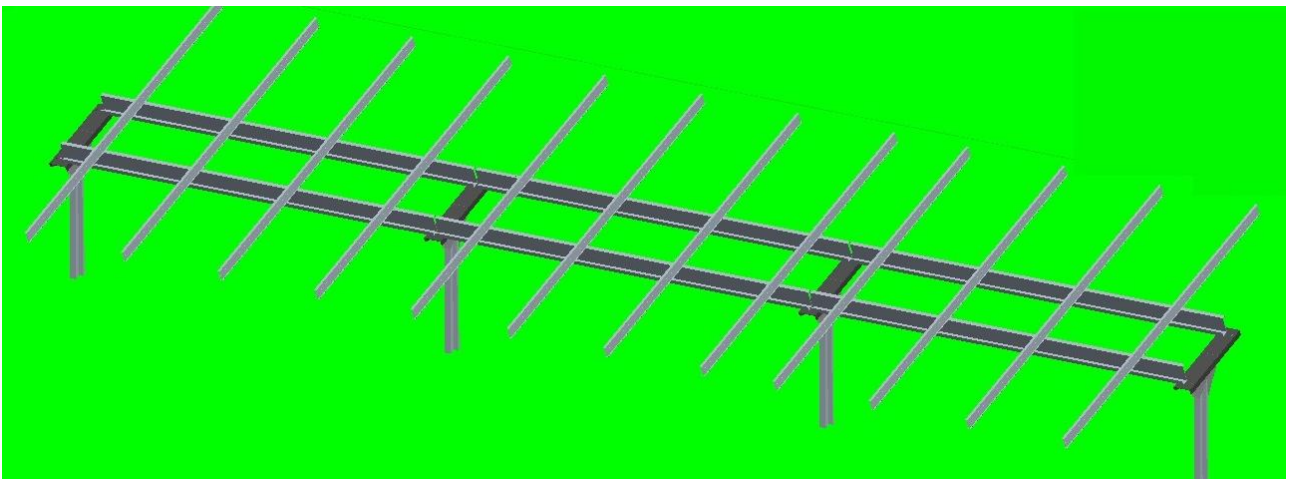
8. Install the second row.



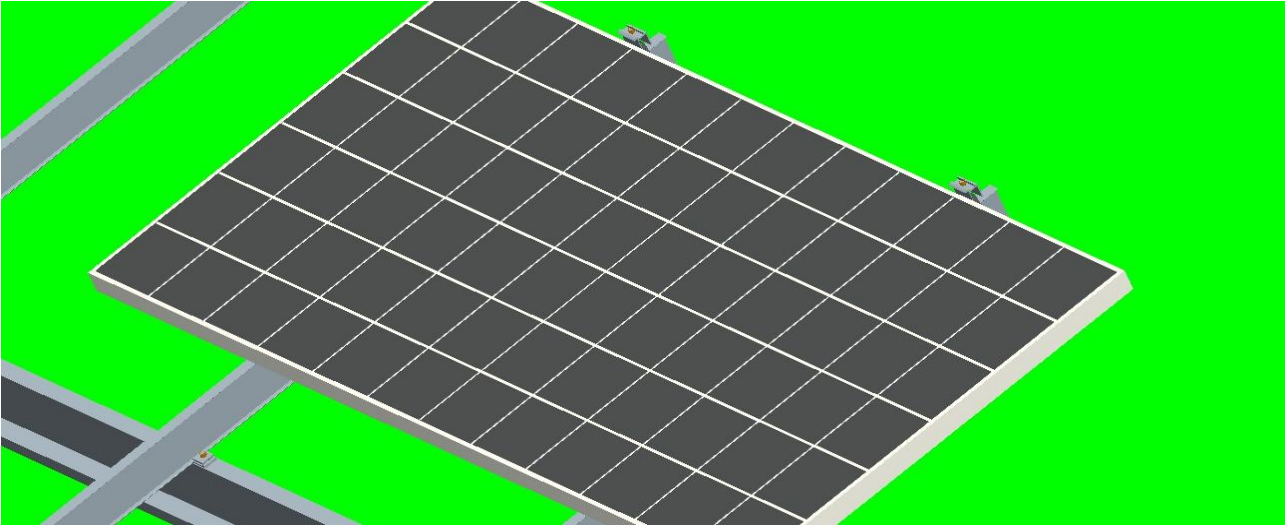
9. Put the purlin onto the girders.



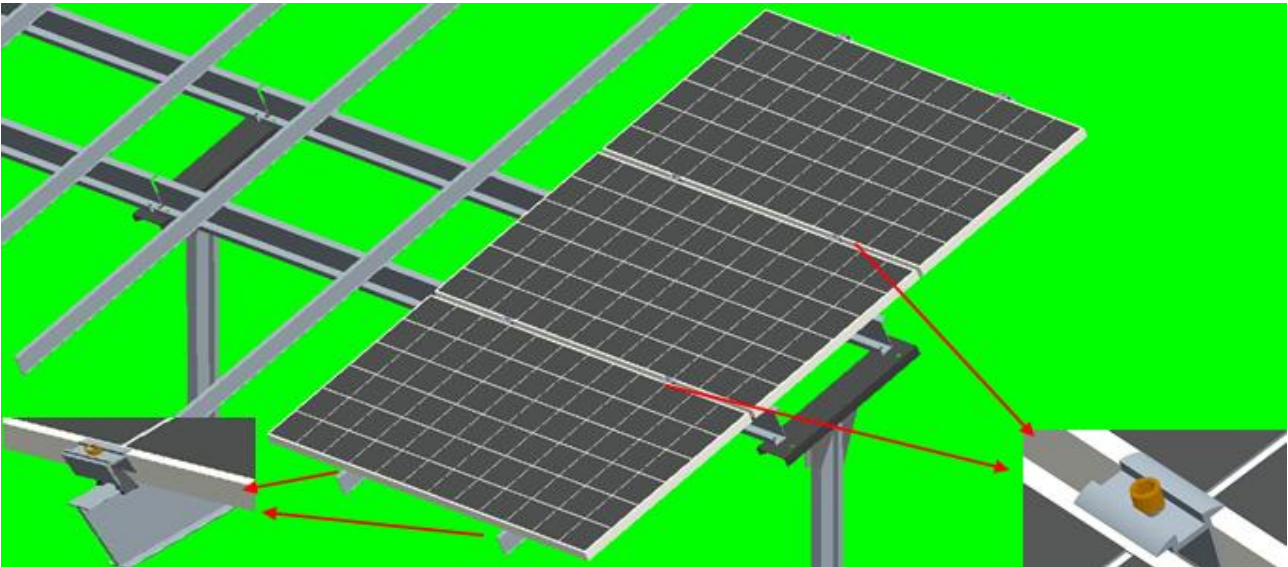
10. Fasten the purlin with locking assembly as showing as the picture.



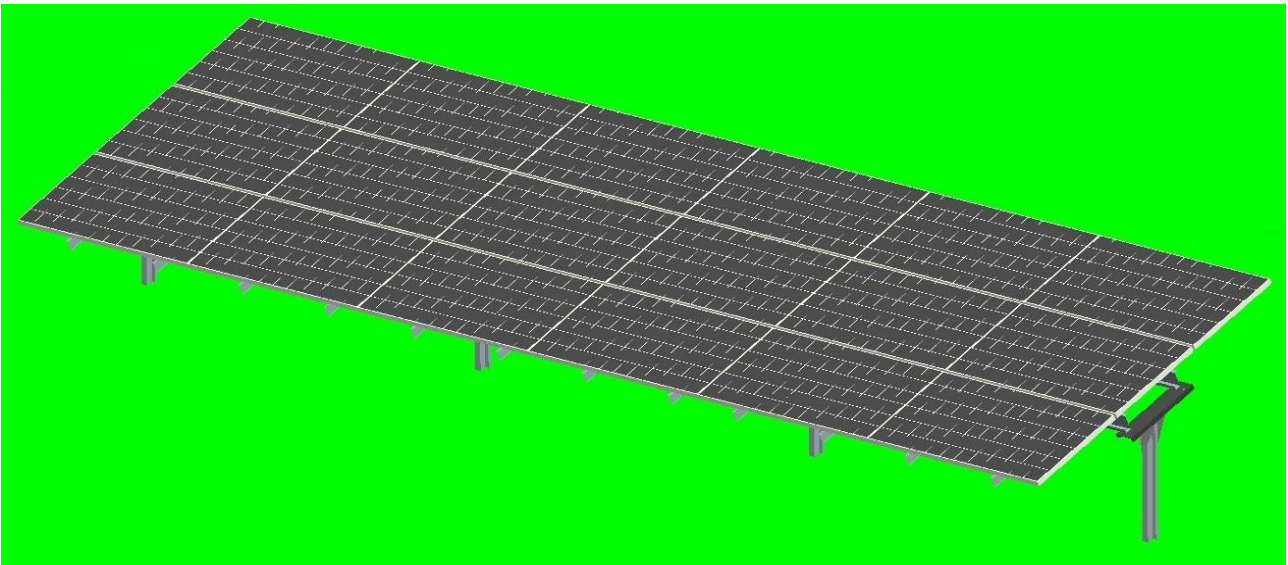
11. Repeat the above step 9 and 10 to install all the purlins.



12. Place the solar panel onto the purlins and fasten it with end clamps.



13. Put other solar panels onto the purlins and fasten them with mid clamps and end clamps.



14. Repeat the above steps to complete the whole system.