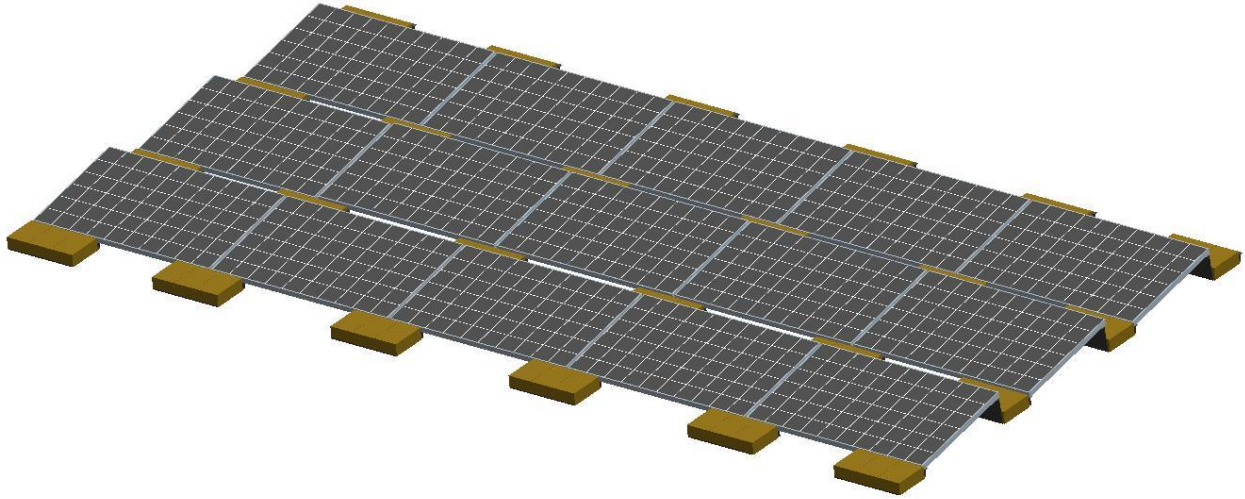


# Tray-Flat Installation Manual

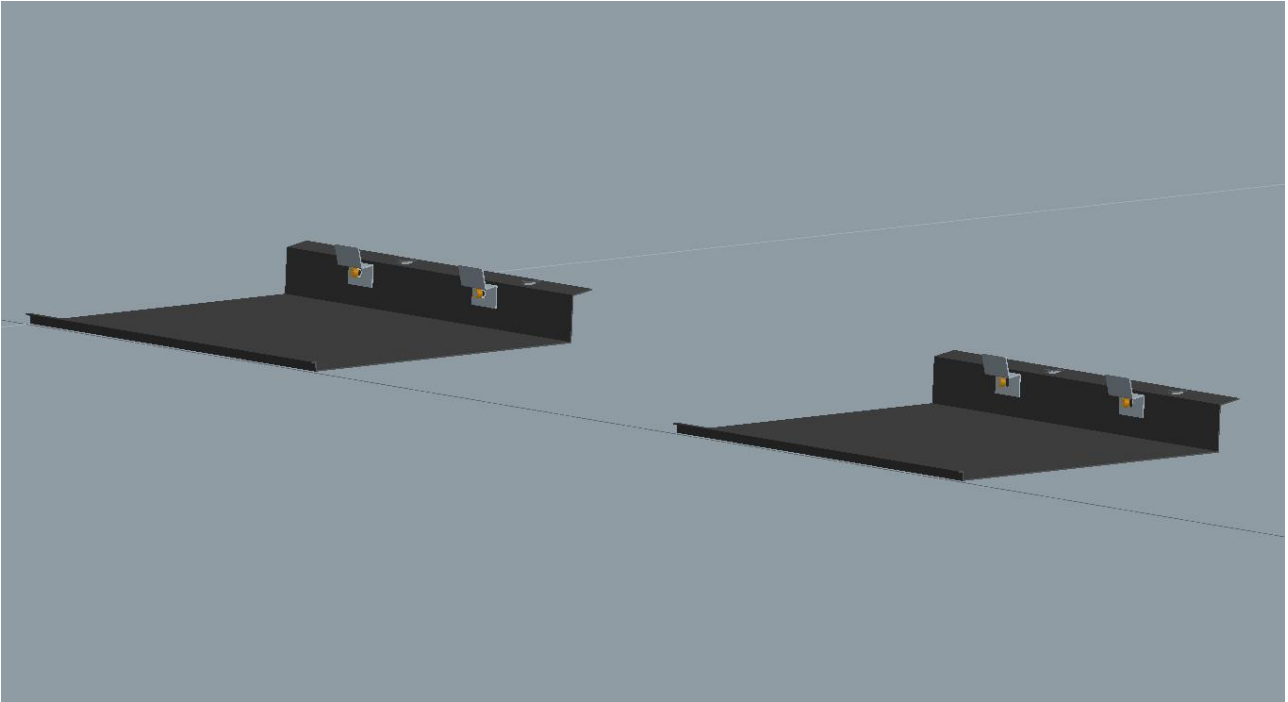


The Tray-Flat is a flat roof mounting system whose design and configuration has been accurately calculated and strictly tested. The designed trays are easily to be connected by solar panels and the pre-assembled parts of the tray simplify the installation. No rails are needed which save costs and installation time. Ballast is needed to strengthen the whole system.

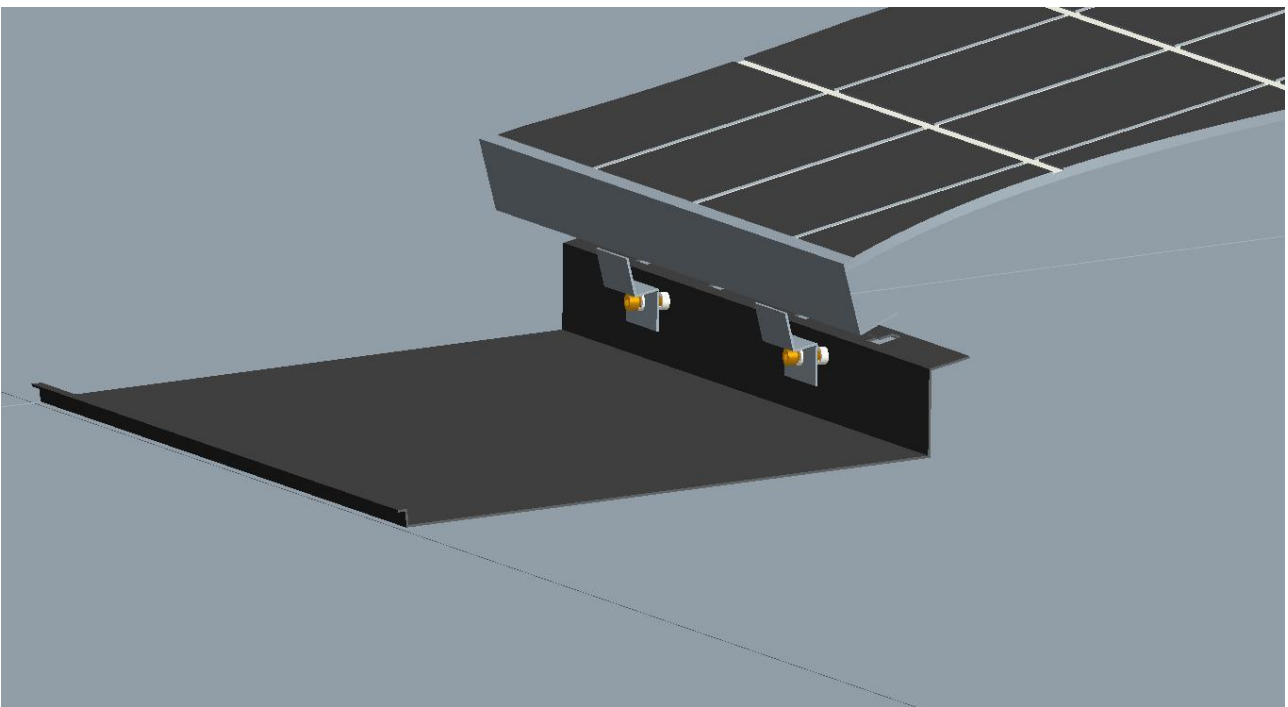
## Benefits

- \* An easy installation method.
- \* Unique design of tray connected with solar panel directly which simplify the installation.
- \* Save labor of installation
- \* Made of aluminum alloy to reduce weight and save transportation costs.
- \* 10° angle available.

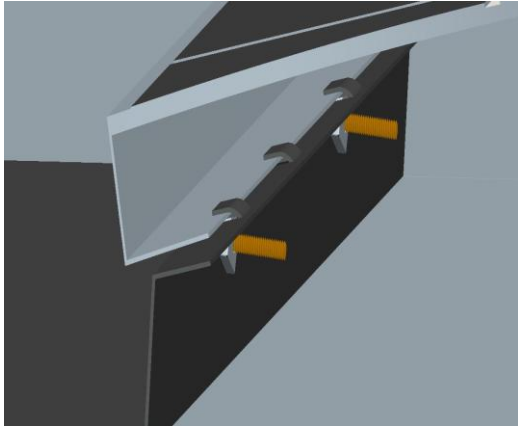
## Installation



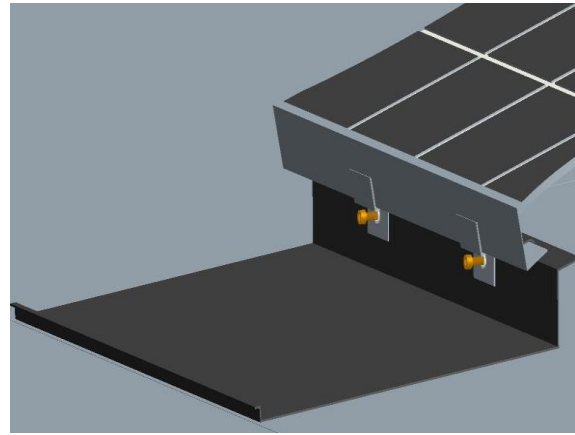
1. Put the front tray on the flat roof with clamps, nuts and bolts pre-assembled.



2. Put the solar panel on the front tray as the picture shows.

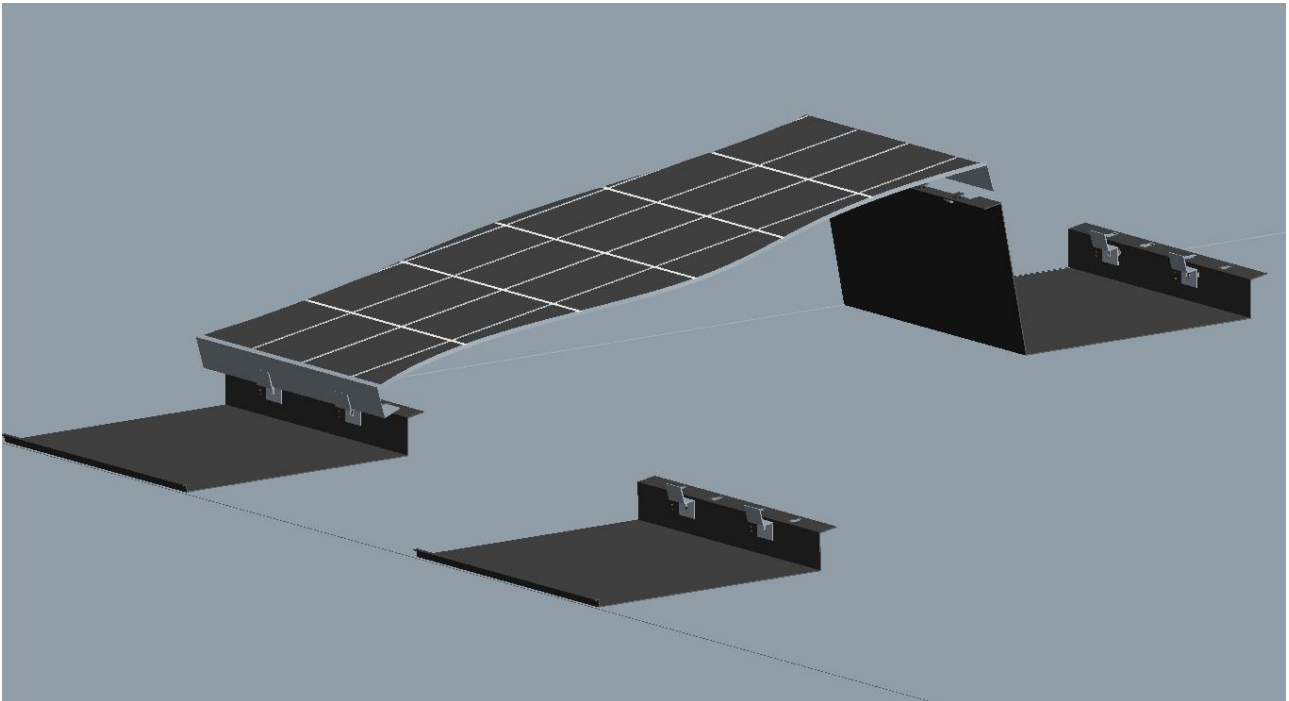


(3.1)

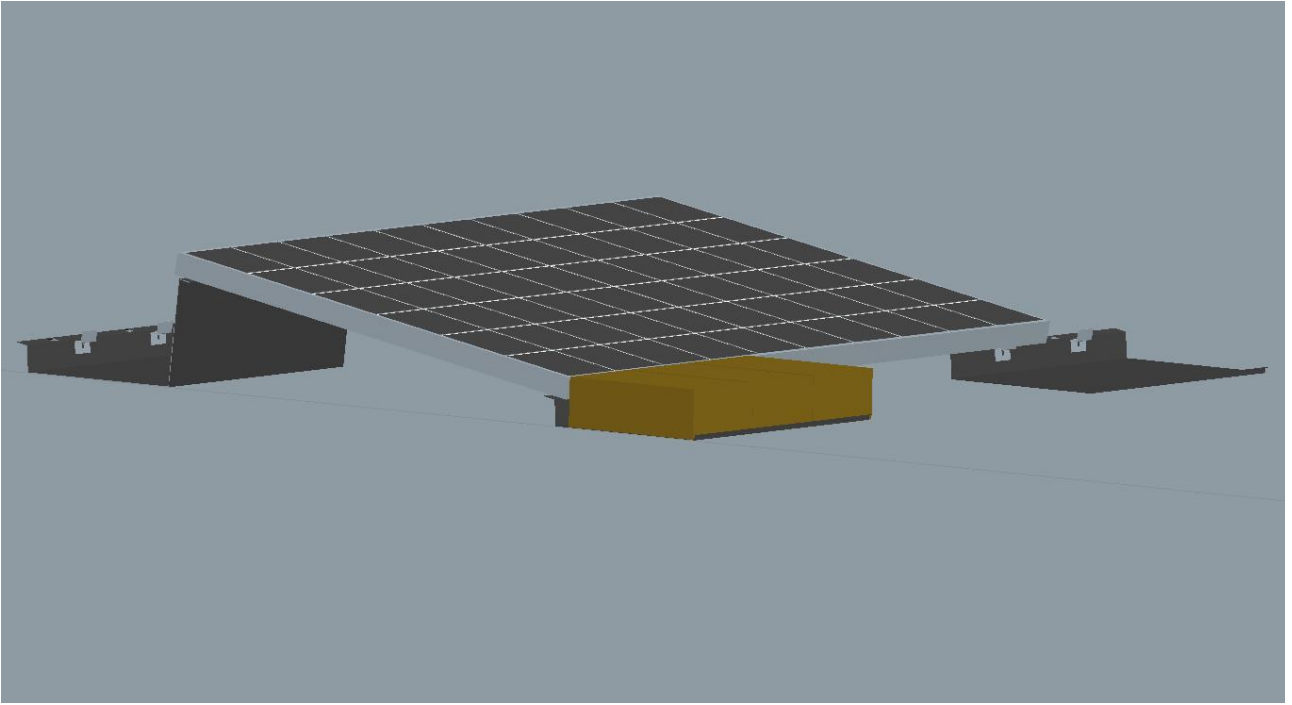


(3.2)

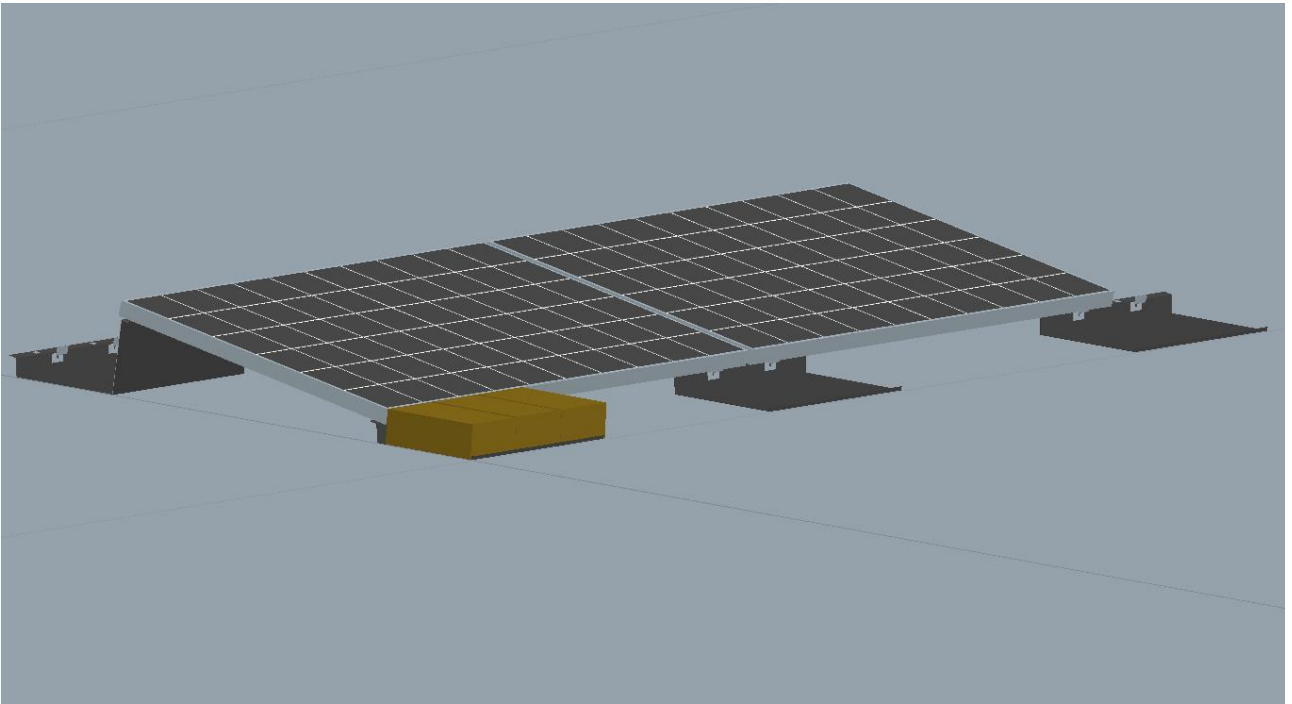
3. Insert back flange of panel into hook of front tray (as showed as 3.1) and fasten the bolt to fix one side of the solar panel onto the tray (as showed as 3.2).



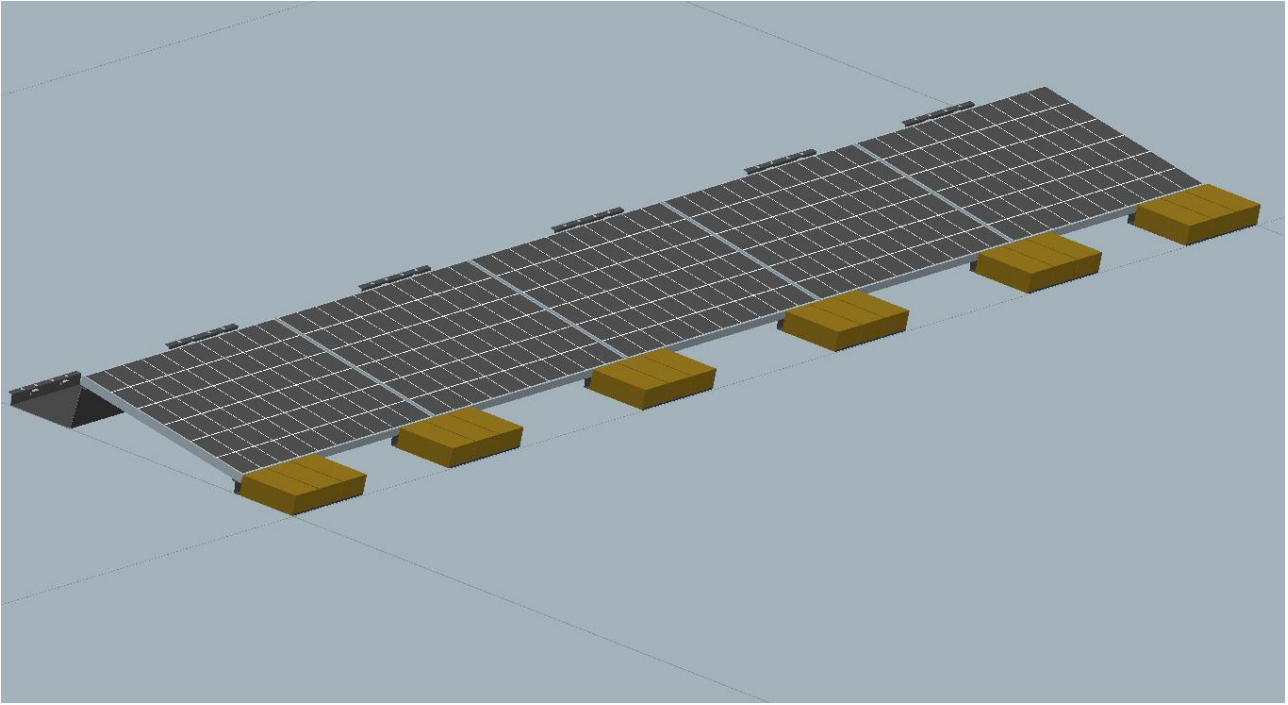
4. Insert back flange of panel into the higher hook of back tray and fasten the bolt to fix the other side of the solar panel onto the tray.



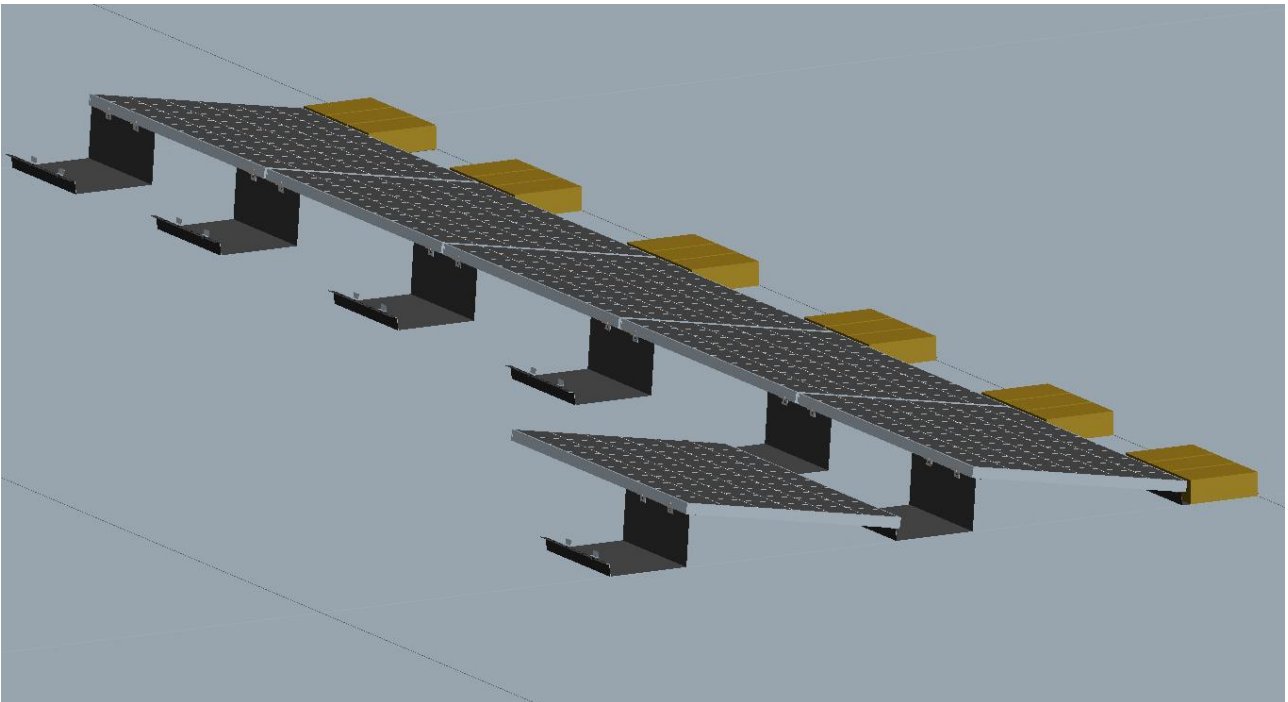
5. Put ballast onto the tray.



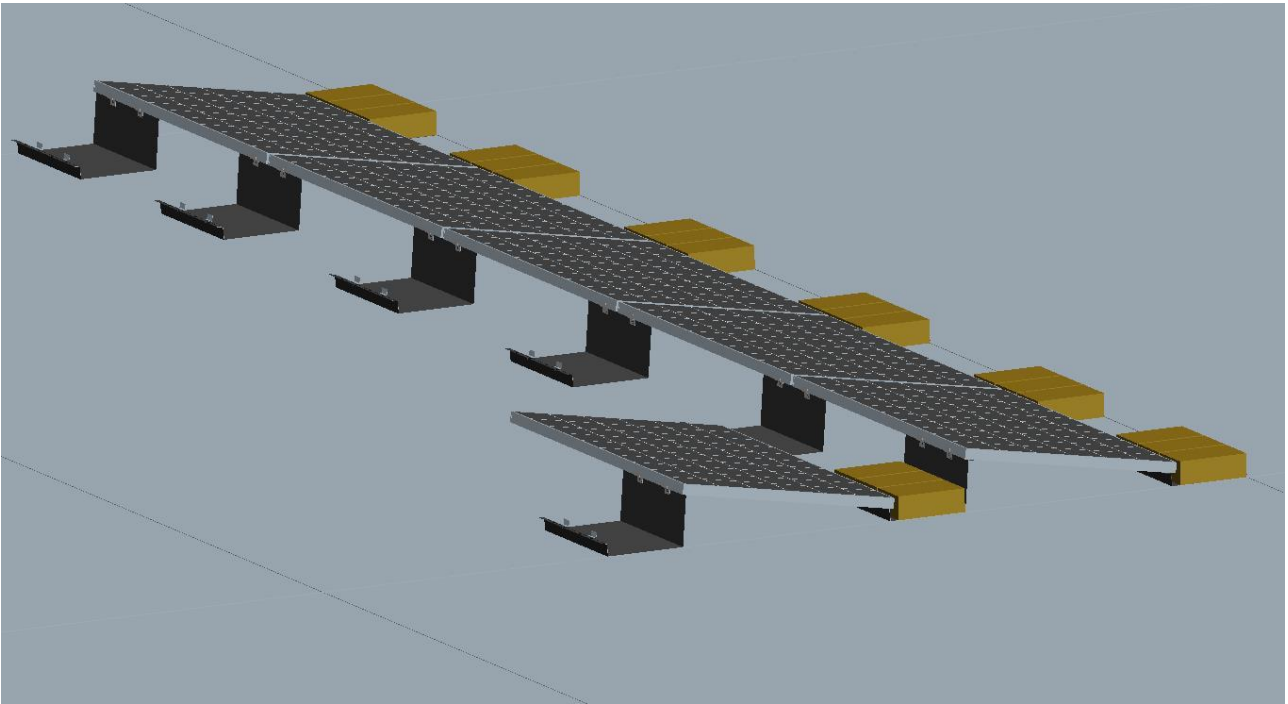
6. Repeat the above steps to install other solar panels on the tray.



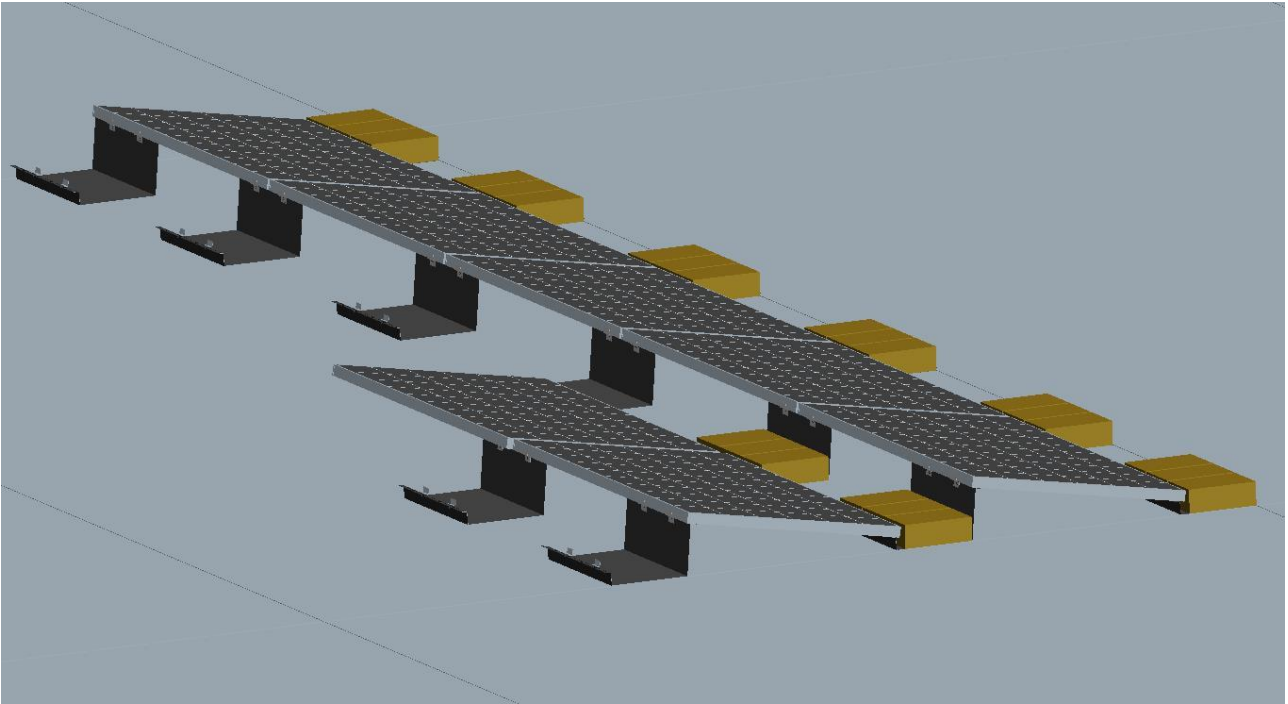
7. Put ballast on the front trays when finished the first row.



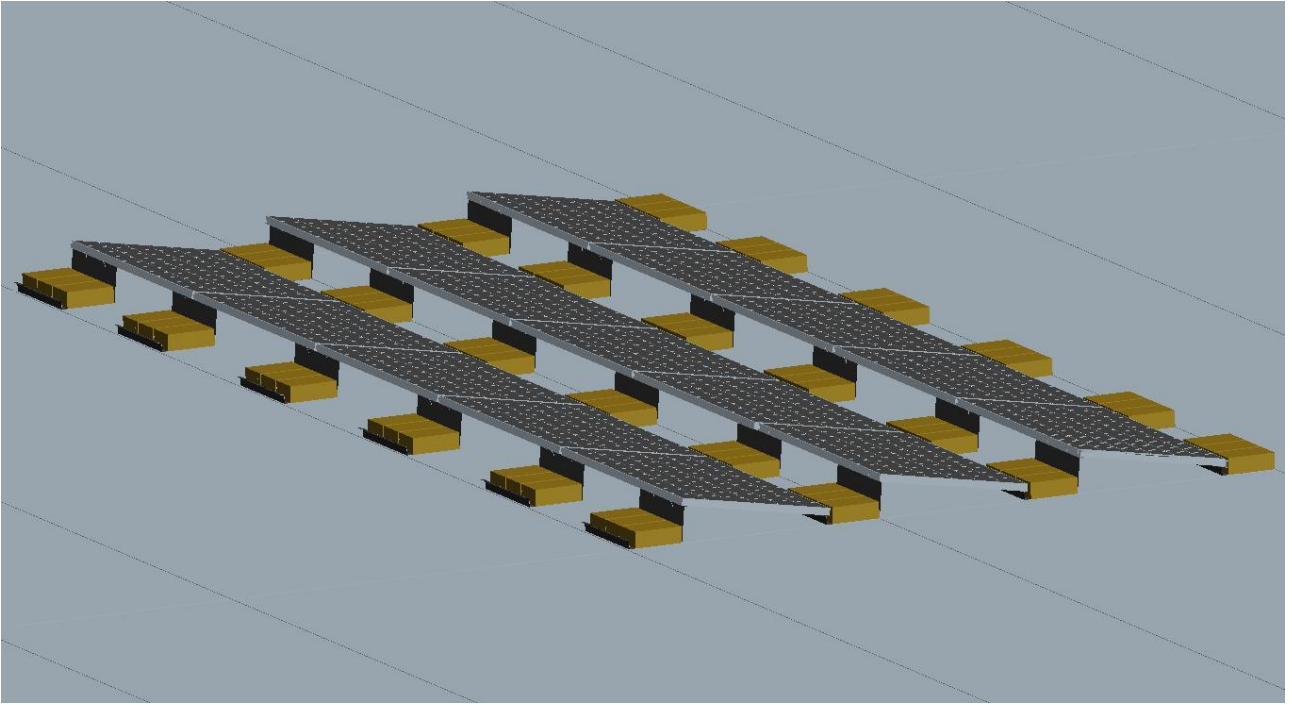
8. Install the second row as the steps shows above.



9. Put ballast on the tray as picture shows.



10, Install another solar panel and put ballast on the tray.



11. Following the same steps to complete the installation of the whole system.